

10 HOSIER LANE, LONDON, EC1A 9LS

£2,550 Per Month

1 Bedrooms | 1 Bathrooms | To Let

Property Features

- Large One Bedroom Flat
- Fitted Kitchen
- Limestone Bathroom
- 648 sq ft
- Available June
- Solid Wood Flooring
- Fully Furnished
- Fourth Floor
- 24 Hour Concierge

AVAILABLE END OF JUNE- Located just off Giltspur Street close to the historic Smithfield Meat Market is this wonderfully positioned one Bedroom apartment in a development called 10, Hosier Lane located on the fourth floor of the building. This particular property is one of the largest style one bedroom apartments in the development measuring 648 Sq.Ft with both the living area and bedroom providing excellent space. High standard fixtures and fittings have also been supplied throughout including the fitted kitchen which boasts an integrated Microwave & Oven, Four Electric Hobs, Washer / Dryer, Dishwasher and full sized Fridge / Freezer. This apartment is fully furnished.

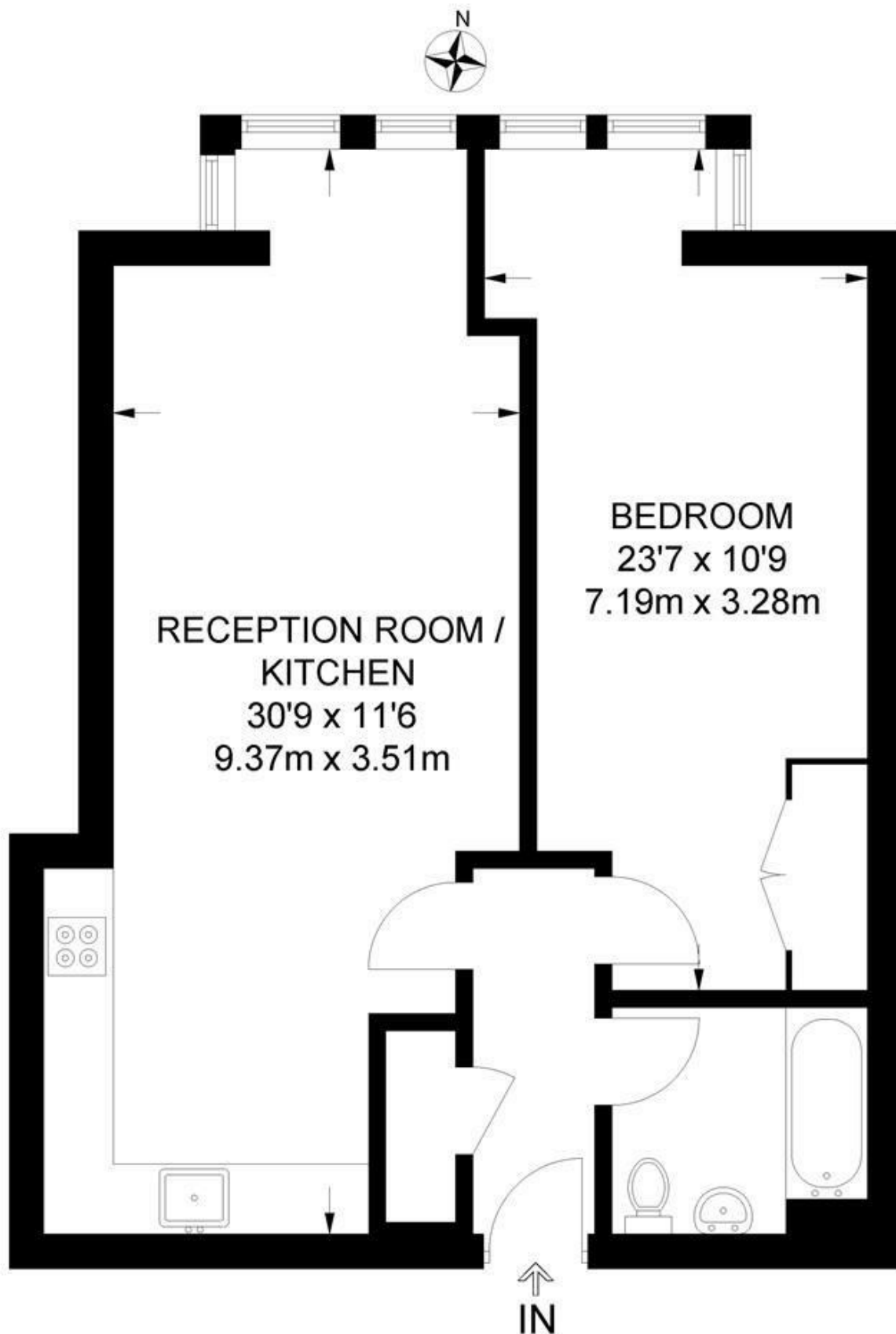
This development offers 24 hour portorage and is situated just off West Smithfield close to St Pauls in a very central CITY location also close to FARRINGDON (Circle Line), St PAUL'S (Central Line) Mansion House and the ELIZABETH LINE Station at Moorgate and Farringdon. Within walking distance are Waitrose, Marks & Spencer and Tesco. Also within easy reach are St. Pauls' Cathedral, The River, South Bank, Tate Modern, and the One New Change Shopping Complex with many shops, restaurants and bars.

Deposit: 5 Weeks Rent

No Agency Fee

Council Tax Band E: £1,625.02 per annum (25% discount for single occupancy)

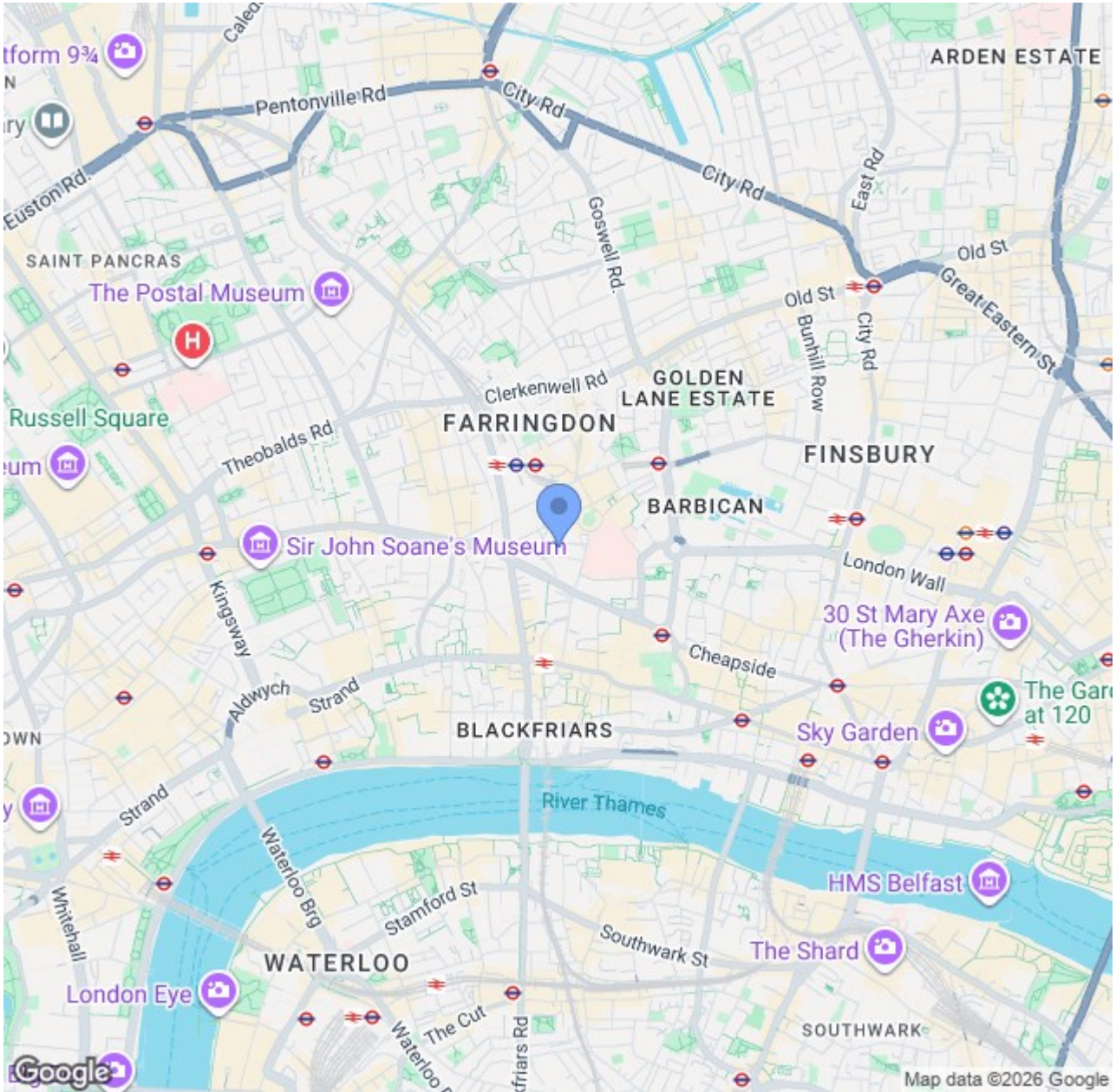




FOURTH FLOOR

APPROXIMATE GROSS INTERNAL AREA
648 SQ FT / 60.2 SQ M

This plan has been drawn for illustrative and identification purposes only.



CONTACT US ABOUT THIS PROPERTY

122 Newgate Street, London, EC1A 7AA

T: 020 7600 0026

F: 020 7600 0025

E: property@scottcity.co.uk



Energy Efficiency Rating		Current	Potential
<i>Very energy efficient - lower running costs</i>			
(92 plus) A			
(81-91) B			86
(69-80) C		76	
(55-68) D			
(39-54) E			
(21-38) F			
(1-20) G			
<i>Not energy efficient - higher running costs</i>			
England & Wales		EU Directive 2002/91/EC	